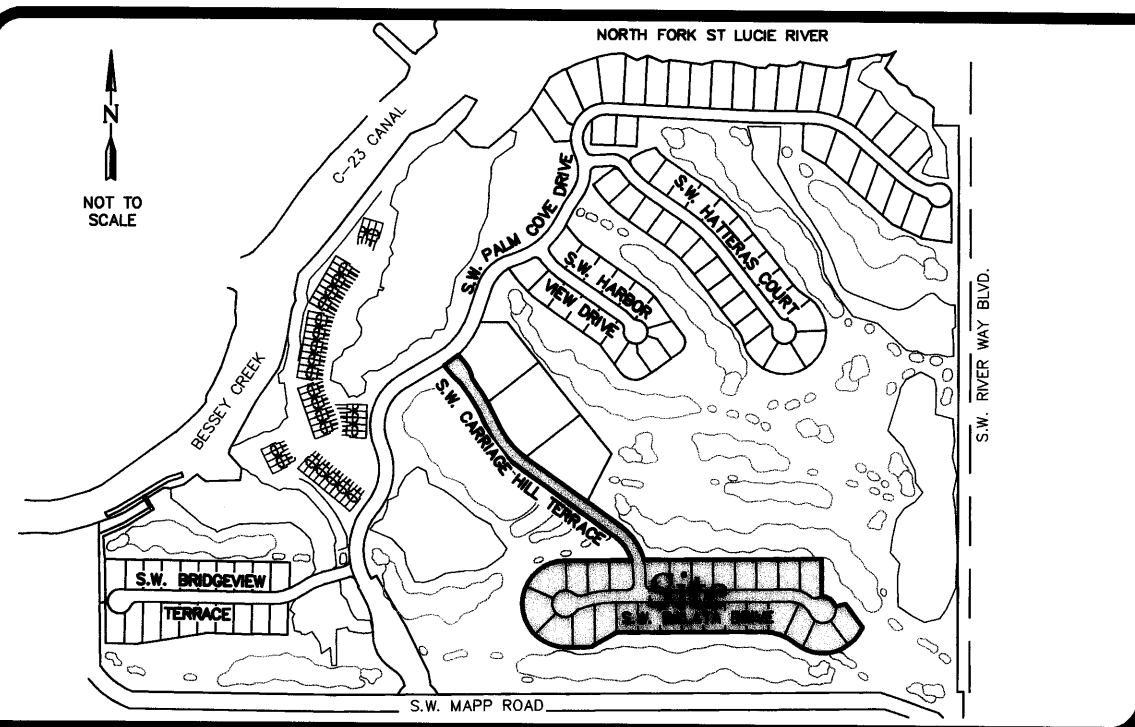


# Palm Cove Golf & Yacht Club Phase 20, A P.U.D.(r)

Plat Book 15  
Page 41

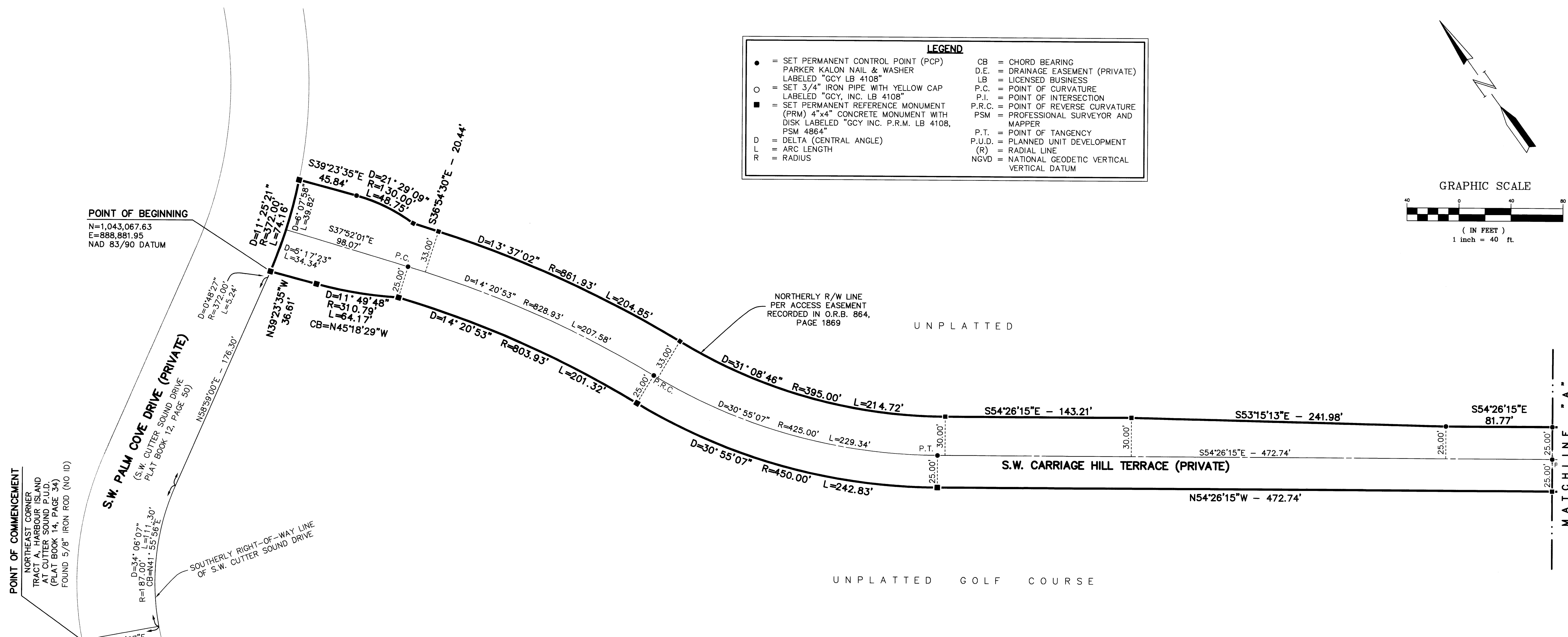
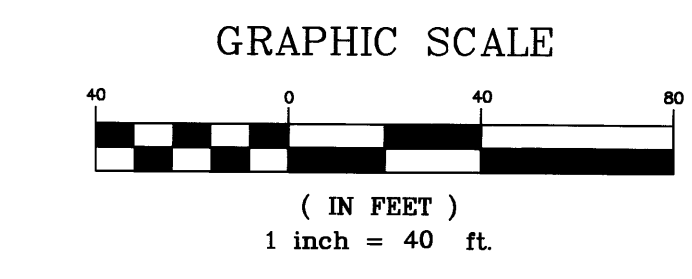
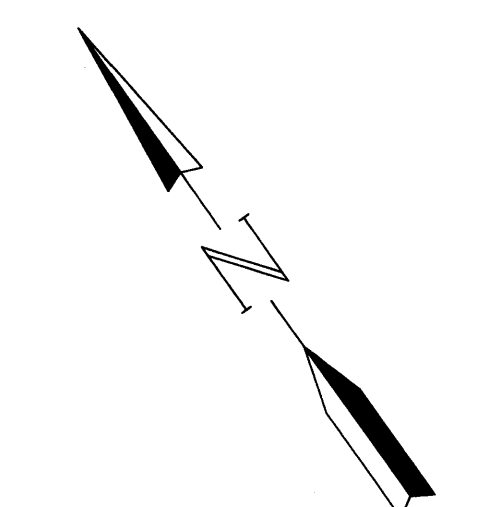
Being a parcel of land lying in Government Lot 3, Section 6,  
Township 38 South, Range 41 East, Martin County, Florida.

October 2002



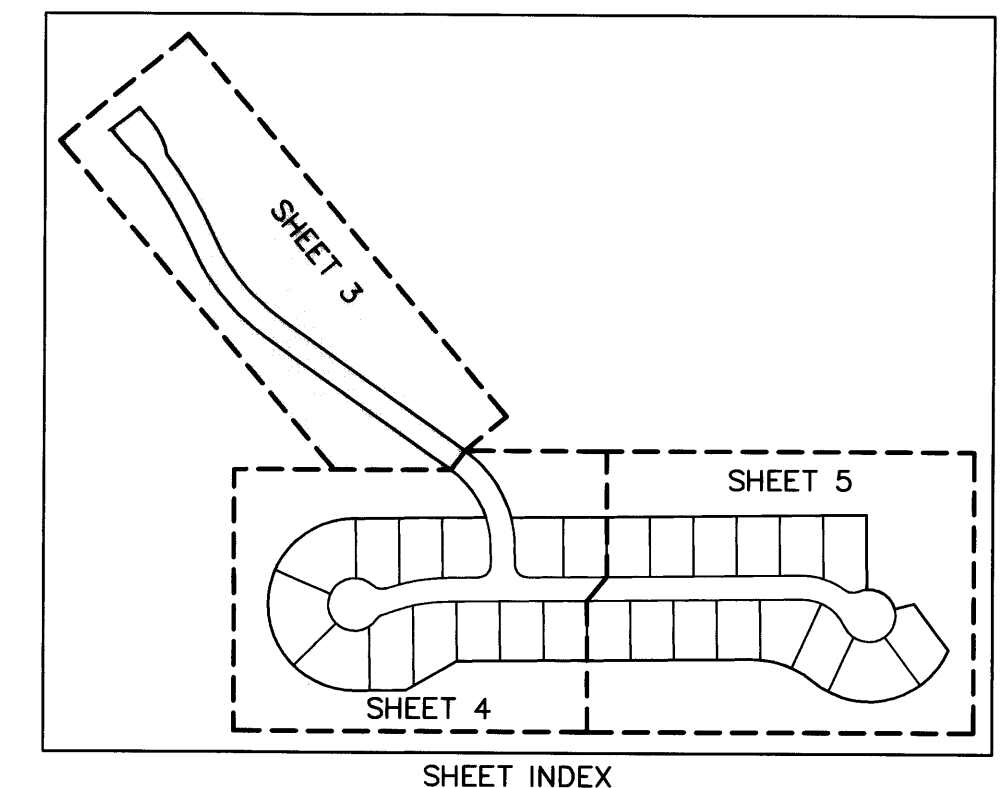
LOCATION MAP

LEGEND	
●	= SET PERMANENT CONTROL POINT (PCP) PARKER KALON NAIL & WASHER LABELED "GCY LB 4108"
○	= SET 3/4" IRON PIPE WITH YELLOW CAP LABELED "GCY, INC. LB 4108"
■	= SET PERMANENT REFERENCE MONUMENT (PRM) 4"x4" CONCRETE MONUMENT WITH DISK LABELED "GCY INC. P.R.M. LB 4108, PSM 4864"
D	= DELTA (CENTRAL ANGLE)
L	= ARC LENGTH
R	= RADIUS
CB	= CHORD BEARING
D.E.	= DRAINAGE EASEMENT (PRIVATE)
LB	= LICENSED BUSINESS
P.C.	= POINT OF CURVATURE
P.I.	= POINT OF INTERSECTION
P.R.C.	= POINT OF REVERSE CURVATURE
PSM	= PROFESSIONAL SURVEYOR AND MAPPER
P.T.	= POINT OF TANGENCY
P.U.D.	= PLANNED UNIT DEVELOPMENT
(R)	= RADIAL LINE
NGVD	= NATIONAL GEODETIC VERTICAL DATUM



**SURVEYOR'S NOTES**

- 1) THIS PLAT, AS RECORDED IN ITS ORIGINAL FORM IN THE PUBLIC RECORDS, IS THE OFFICIAL DEPICTION OF THE SUBDIVIDED LANDS DESCRIBED HEREON AND WILL IN NO CIRCUMSTANCES BE SUPPLANTED IN AUTHORITY BY ANY OTHER FORM OF THIS PLAT, WHETHER GRAPHIC OR DIGITAL.
- 2) THERE MAY BE ADDITIONAL RESTRICTIONS THAT ARE NOT RECORDED ON THIS PLAT THAT MAY BE FOUND IN THE PUBLIC RECORDS OF THIS COUNTY.
- 3) THERE SHALL BE NO BUILDING OR ANY OTHER KIND OF CONSTRUCTION, OR PLACEMENT OF TREES OR SHRUBS ON DRAINAGE EASEMENTS.
- 4) BEARINGS SHOWN HEREON ARE REFERENCED TO THE CENTER LINE OF S.W. CUTTER SOUND DRIVE, ACCORDING TO THE PLAT OF PHASES 3 AND 8 CUTTER SOUND P.U.D., AS RECORDED IN PLAT BOOK 12, PAGE 50 OF THE PUBLIC RECORDS OF MARTIN COUNTY, FLORIDA. SAID LINE BEARS N58°59'00" E.
- 5) ALL ELEVATIONS SHOWN HEREON ARE IN FEET AND REFERENCED TO THE NATIONAL GEODETIC VERTICAL DATUM (NGVD) 1929 AND BASED ON MARTIN COUNTY BENCHMARK "MAPP & CUT-1" HAVING AN ELEVATION OF 7.335 FEET.



Job Number 01-1133-28-01  
Licensed Business #4108

**GCY**  
INCORPORATED  
PROFESSIONAL SURVEYORS AND MAPPERS  
CERTIFICATE OF AUTHORIZATION LB 4108

CORPORATE OFFICE: PO BOX 1469 • 1505 SW MARTIN HWY. PALM CITY, FL 34991 (800) 386-1066  
TALLAHASSEE OFFICE: 4909 N. MONROE STREET TALLAHASSEE, FL 32303 (850) 536-8455